

## Insulation filter ball valves

- Energy efficient
- Reduces risk of condensation
- Sound dampening



### Application

Heating and cooling systems

### Construction

The insulation consists of two halves EPS (Neopor 30)

### Marking

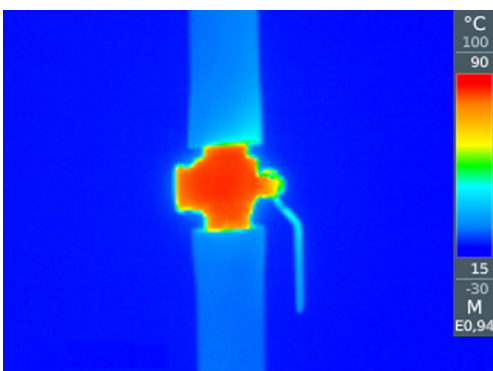
Impel

### Installation

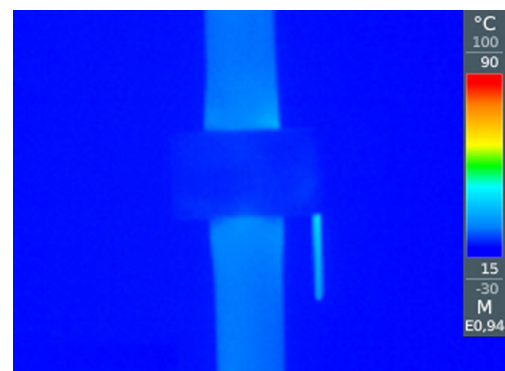
The insulation is installed by pressing the two halves together around the valve.

### Technical data

Lambda-value ( $\lambda$ )	0,030 W/mK (DIN52612)
Short peak temperatures	90°C (DIN53424)
Operating temperature	70°C (DIN53424)
Fire properties	E (E13501-1)
Density	30 g/l

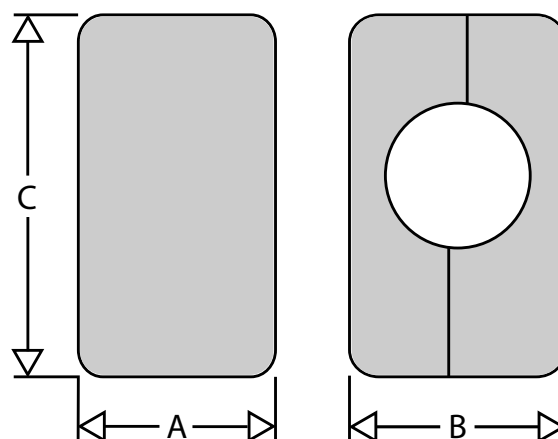


Thermal image illustrating the surface temperature of an uninsulated valve.



Thermal image illustrating the surface temperature of an insulated valve. The heat loss is significantly reduced compared to the uninsulated valve.

*Subject to technical changes and corrections without notice*



Item number	Description	Width A	Depth B	Height C	Weight (kg per piece)
0752100225	INSULATION FOR 480-SERIES 1"	78	80	135	0,02
0752100232	INSULATION FOR 480-SERIES 1 1/4"	90	89	155	0,02

## Compatibility

### Compatibility 480 - 480K

Item number	Description	INSULATION FOR 480-SERIES G25	INSULATION FOR 480-SERIES G32
0448002000	Filter ball valve 480-20, 3/4"F, lever	x	
0448002500	Filter ball valve 480-25, 1"F, lever	x	
0448003200	Filter ball valve 480-32, 1 1/4"F, lever		x
0448002001	Filter ball valve 480K-20, 3/4"F, key grip	x	
0448002501	Filter ball valve 480K-25, 1"F, key grip	x	
0448003201	Filter ball valve 480K-32, 1 1/4"F, key grip		x

### Compatibility 484

Item number	Description	INSULATION FOR 480-SERIES G25	INSULATION FOR 480-SERIES G32
0448402000	Filter ball valve 484-20, 3/4"M, lever	x	
0448402500	Filter ball valve 484-25, 1"M, lever	x	
0448403200	Filter ball valve 484-32, 1 1/4"M, lever		x

### Compatibility 486 - 486K

Item number	Description	INSULATION FOR 480-SERIES G25	INSULATION FOR 480-SERIES G32
0448602010	Filter ball valve 486-20, 3/4"F, lever, magnet	x	
0448602510	Filter ball valve 486-25, 1"F, lever, magnet	x	
0448603210	Filter ball valve 486-32, 1 1/4"F, lever, magnet		x
0448602001	Filter ball valve 486K-20, 3/4"F, key grip, magnet	x	
0448602501	Filter ball valve 486K-25, 1"F, key grip, magnet	x	
0448603201	Filter ball valve 486K-32, 1 1/4"F, key grip, magnet		x

All dimensions in millimeters

Subject to technical changes and corrections without notice